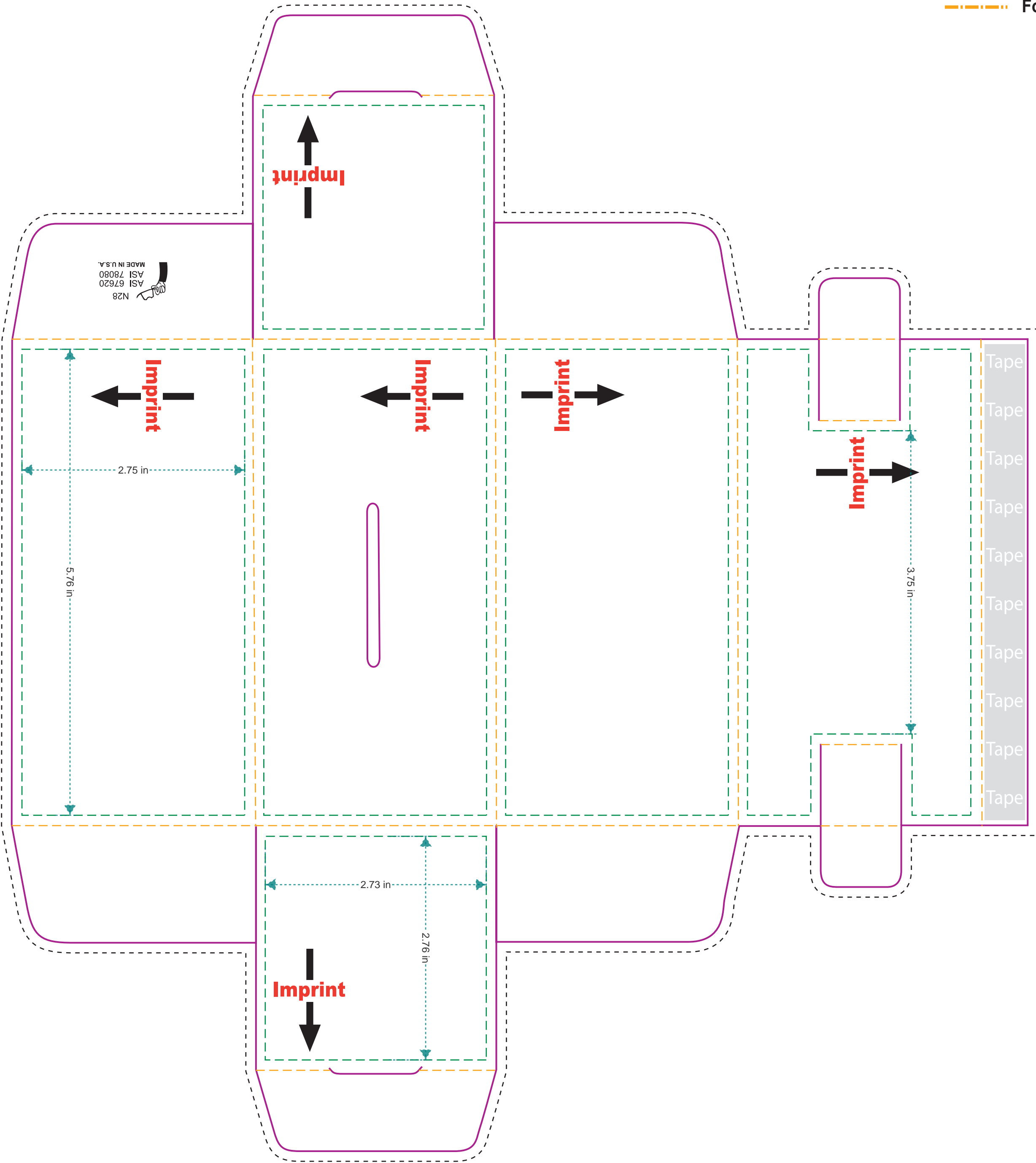


Actual size
Width: 12.5 in.
Height: 14 in.

Assembled size
Width: 6 in.
Height: 3 in.
Depth: 3 in.

N28 Box Bank

- **Bleed Line**
(1/8" offset from Die Line)
- **Die Line**
(represents actual cut product)
- - - - **Live Area**
(1/8" inset from Die Line)
- . - . **Fold**



Please keep all text and graphics inside the Live Area unless the graphic element is intended to bleed. Borders, if included, should bleed outward from the Live Area.
 Please model spot colors using the Pantone solid coated Matching System
 Please submit all Fonts and Links for output with your Final Composite.